

EPCOS Product Brief 2011

# Power Factor Correction

Software BR7000-SOFT for Power Quality Solutions

BR7000-SOFT is a Windows-based software for parameterization of PF controller BR6000-R12/S485 (V5.0) onwards and BR7000. It allows a comfortable visualization and analysis of grid parameters during online-operation. At the same time, the storage and graphical analysis of all recorded data inclusive export and printing function can be performed. The spectrum of harmonics can promptly be displayed as bar chart.

- Connection to RS485-bus
- Administration of several PF controllers possible
- Mixed operation of several devices (BR6000/BR7000) possible on a PC
- Convenient analysis of recorded values

- Direct connection at USB-port of PC via accessory USB adapter
- For operating system Windows 2000 onwards
- CD-ROM for BR6000-R12/S485 and BR7000 included in delivery

The **display mode** allows a convenient online-display of different grid parameters. Three display arrangements with each up to twelve different parameters can be shown simultaneously. All values displayed can be recorded for later processing. All maximum values of grid parameters are displayed with time stamp.



# BR7000-SOFT



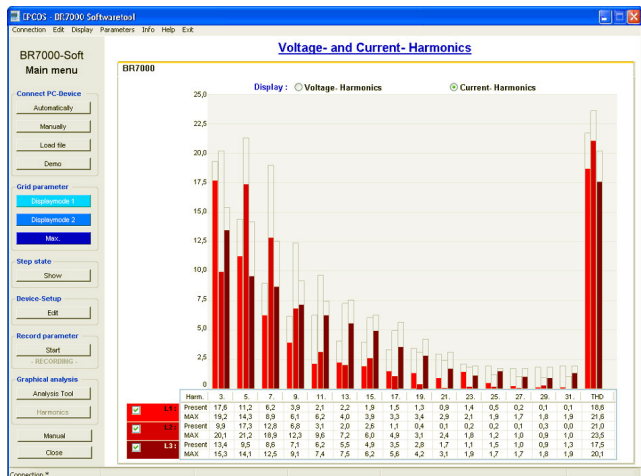
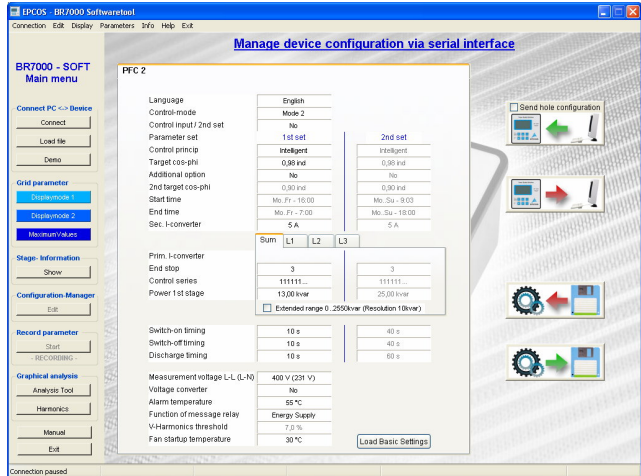
## Displayed parameters

- Reactive power
- Maximum reactive power
- Active power
- Maximum active power
- Apparent power
- Maximum apparent power
- Deviation reactive power
- Power (+) \*
- Power (-) \*
- Power (IND) \*
- Power (CAP) \*
- Temperature
- Measuring voltage
- Minimum voltage \*
- Maximum voltage
- Measuring current
- Maximum current \*
- Cos φ
- Frequency
- Parameter set
- Maximum temperature
- Active steps
- THD-V
- THD-I
- Maximum voltage-THD
- Maximum current-THD

**Step display** delivers detailed information about particular switching steps.

The **graphic mode** allows graphical display of stored grid parameters for a congruent evaluation. All values can be freely configured. Copy and print function are possible.

A **graphic bar diagram** in the online-mode allows the display of harmonic of voltage and current at one glance.



\*) BR7000 only

**Important information:** Some parts of this publication contain statements about the suitability of our products for certain areas of application. These statements are based on our knowledge of typical requirements that are often placed on our products. We expressly point out that these statements cannot be regarded as binding statements about the suitability of our products for a particular customer application. It is incumbent on the customer to check and decide whether a product is suitable for use in a particular application. This publication is only a brief product survey which may be changed from time to time. Our products are described in detail in our data sheets. The Important notes ([www.epcos.com/ImportantNotes](http://www.epcos.com/ImportantNotes)) and the product-specific Cautions and warnings must be observed. All relevant information is available through our sales offices.